

**CONNECTICUT RIVER BRIDGE  
023 LANCASTER-LUNENBURG**

**NH Bridge ID:** Lancaster 039/105

**CARRYING:** NH 135 spur  
**PRESENT NAME:** Mt. Orne Covered Bridge  
**DATE BUILT:** 1911  
**LAT/LONG:** 44.460204,-71.652939



**CROSSING CHRONOLOGY**

- c.1870 First covered bridge built with toll
- 1908 First bridge destroyed by log jam
- 1911 Second covered bridge (present bridge)  
built as free crossing
- 1976 Listed, National Register of Historic Places
- 1983 Bridge rehabilitated



FIGURE 1: Mt. Orne Covered Bridge, built 1911. New Hampshire end (Historic Documentation Co. Inc. 2012).

**CROSSING HISTORY**

**First bridge:** The earlier bridge that served the Mt. Orne crossing is thought to have been built around 1870 by the Union Bridge Company. Constructed to serve as a toll bridge, the business as conducted by Jim Powers until 1908, when a log jam forced the bridge off its abutments and ruined the structure. For three years afterward the crossing was served by ferry.

**Second bridge:** The towns of Lancaster and Lunenburg constructed the present bridge in 1911, each contributing \$2,500; from that time forward this was a free crossing. Ironworks engineer Charles Babbitt oversaw the construction for the Berlin Construction Company, a subsidiary of the American Bridge Company. One of the few surviving covered bridges spanning the Connecticut between New Hampshire and Vermont, it is 266 feet long and is a two-span example of the Howe truss design, mounted on a concrete pier and on abutments of rubble stonework capped with concrete. The wooden deck structure is interrupted at the center by the pier. The Howe truss had been one of the most frequently employed truss designs during the late 19<sup>th</sup> century. It used verticals made of wrought iron in place of wooden timbers and thus represented a composite of timber and iron truss construction. The Mt. Orne Bridge was listed on the National Register in 1976 and underwent a rehabilitation in 1983.

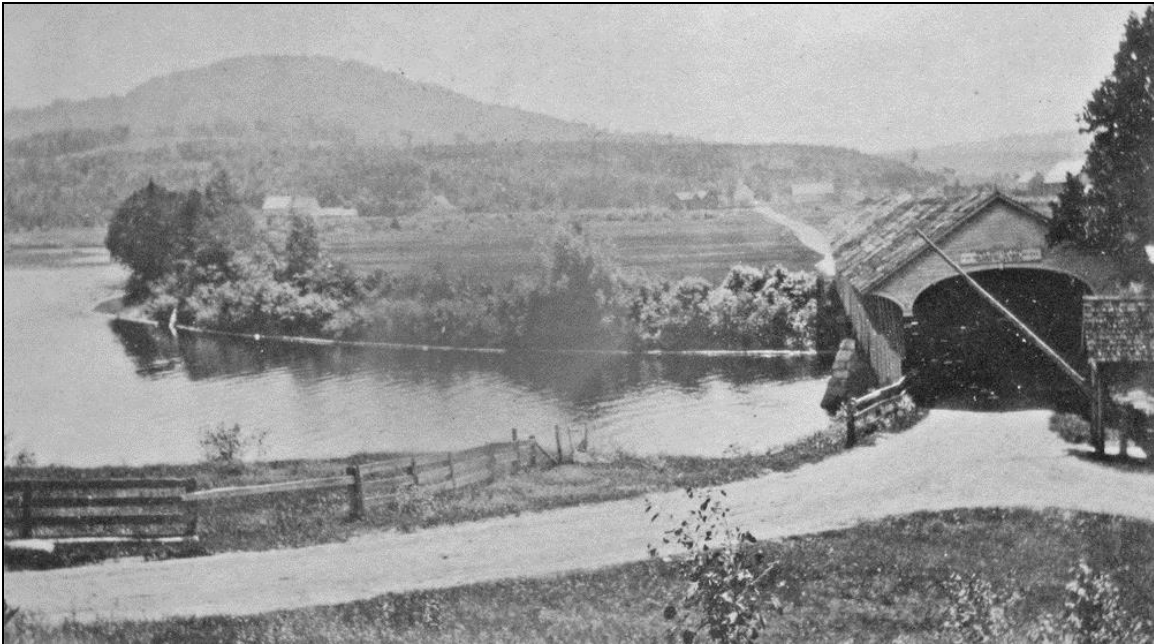


FIGURE 2: First Mt. Orne Covered Bridge, built c.1870, destroyed 1908 (Lancaster Historical Society).



FIGURE 3: Mt. Orne Covered Bridge, built 1911. Upstream side, from Vermont (Historic Documentation Co. Inc. 2012).



FIGURE 4: Mt. Orne Covered Bridge, built 1911. Downstream side, from Vermont (Historic Documentation Co. Inc. 2012).

## **BIBLIOGRAPHY**

Bridgehunter webpage—Mt. Orne Covered Bridge, accessed online at [www.bridgehunter.com/nh/coos/14100390010500/](http://www.bridgehunter.com/nh/coos/14100390010500/) .

Knoblock, Glenn A. *New Hampshire Covered Bridges*. Charleston, SC: Arcadia Publishing, 2002.

Lancaster Historical Society photograph collection. Lancaster Historical Society, 226 Main St., Lancaster, NH.

McCullough, Robert. *Crossings: A History of Vermont Bridges*. Barre: Vermont Historical Society, 2005.

New Hampshire Division of Historical Resources webpage—Mt. Orne Bridge, accessed online at [www.nh.gov/nhdhr/bridges/p57.html](http://www.nh.gov/nhdhr/bridges/p57.html) .

NHDOT Bridge Card, Lancaster 039/105, 1941. On file at NHDOT.

Streeter, Nellie M. *The Town of Lunenburg, Vermont, 1763-1976*. Lunenburg: The Town of Lunenburg Historical Society, 1977.