

**CONNECTICUT RIVER BRIDGE
031 STEWARTSTOWN-CANAAN**

NH Bridge ID: Stewartstown 054/163

CARRYING: Bridge Street
PRESENT NAME: Beechers Falls Bridge
DATE BUILT: 1930
LAT/LONG: 45.007929,-71.507456

CROSSING CHRONOLOGY

- 1882 First bridge, a free covered bridge, funds raised by subscription
- 1930 Second bridge, present steel arch girder structure

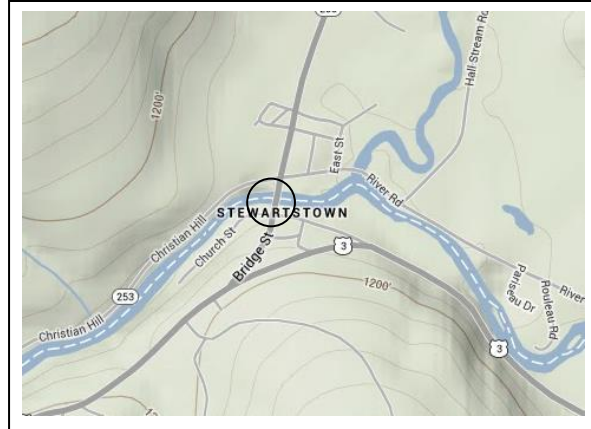


FIGURE 1: Beechers Falls Bridge, built 1930. Downstream side from Vermont shore (Historic Documentation Co. Inc. 2013).

CROSSING HISTORY

First bridge: The first bridge at this crossing place, built in 1882, was a single-span, wooden covered bridge of Paddleford truss design that was 150 feet in length. This structure was funded via a subscription raised among local inhabitants and thus began life as a free bridge. By 1922 the bridge had been reinforced with interior arches made of laminated planks.

Second bridge: In 1930 the New Hampshire Highway Department replaced the covered bridge with the present single-span steel arch girder structure, 232 feet in length and supported by concrete abutments. The steel arch is of the two-hinged type. Harold E. Langley of the Highway Department staff designed the bridge. American Bridge Company fabricated the structural steel and Kittredge Bridge Co. served as contractor. In 1931, the American Institute of Steel Construction gave the new bridge its annual award as most beautiful steel bridge in Class C. The bridge received a new deck in 1971.

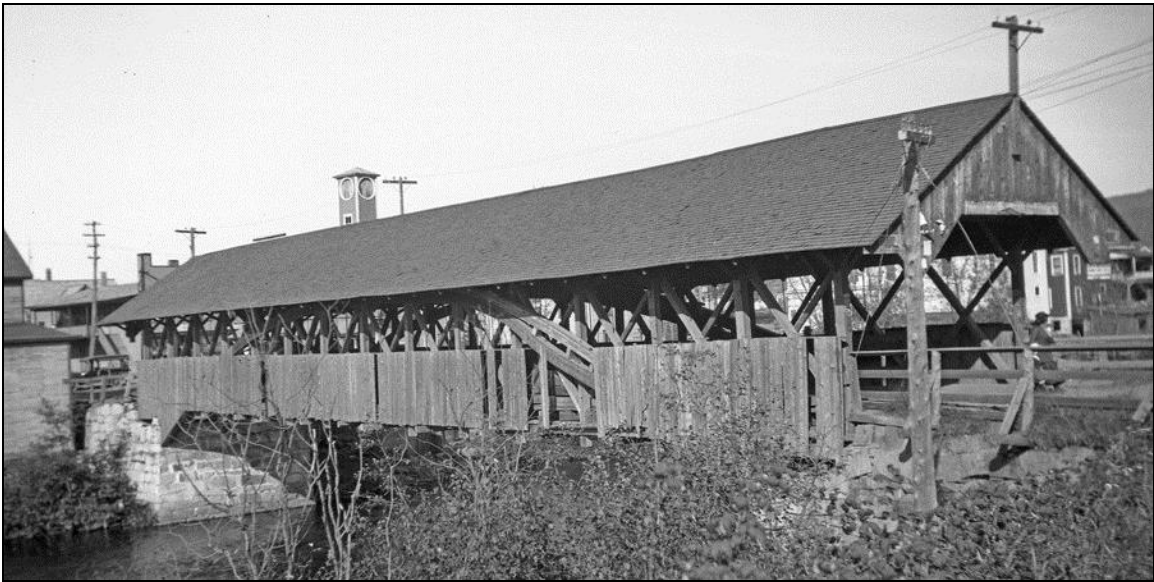


FIGURE 2: Beechers Falls covered bridge built 1882. Photo dated October 3, 1922, showing downstream side from New Hampshire (Storrs).

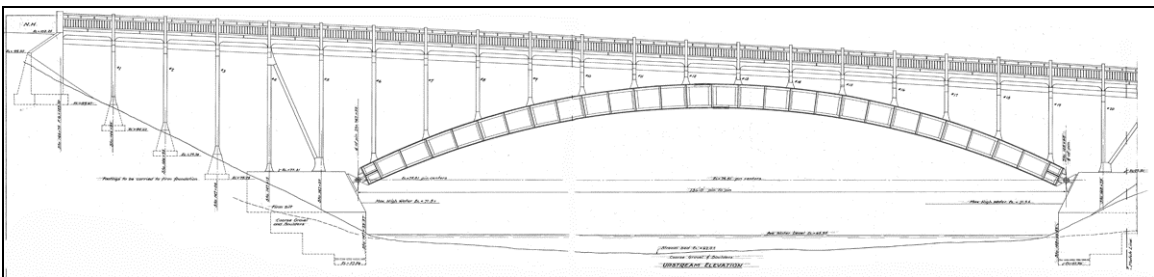


FIGURE 3: Beechers Falls Bridge, elevation drawing from original bridge plans (NHDOT 1930).



FIGURE 4: Beechers Falls Bridge, built 1930. New Hampshire approach shown September 9, 1941 (NHDOT 1941).



FIGURE 5: Beechers Falls Bridge, built 1930. Vermont approach shown September 9, 1941 (NHDOT 1941).



FIGURE 5: Beechers Falls Bridge, built 1930. Upstream side from Vermont shore (Historic Documentation Co. Inc. 2013).

BIBLIOGRAPHY

Garvin, James. Mss on Connecticut River bridges. On file at NH Division of Historical Resources, Concord.

John Storrs Photograph Collection. Located at New Hampshire Division of Historical Resources, Concord.

Knoblock, Glenn A. *New Hampshire Covered Bridges*. Charleston, SC: Arcadia Publishing, 2002.

Merrill, George Drew. *History of Coos County, New Hampshire*. Syracuse: W.A. Ferguson & Co., 1888.

NHDOT Bridge Card, Stewartstown 054/163, 1941. On file at NHDOT, Concord.

NHDOT Bridge Drawings, Stewartstown 054/163, 1930. File Location No. L-1. Filed at NHDOT, Concord.