

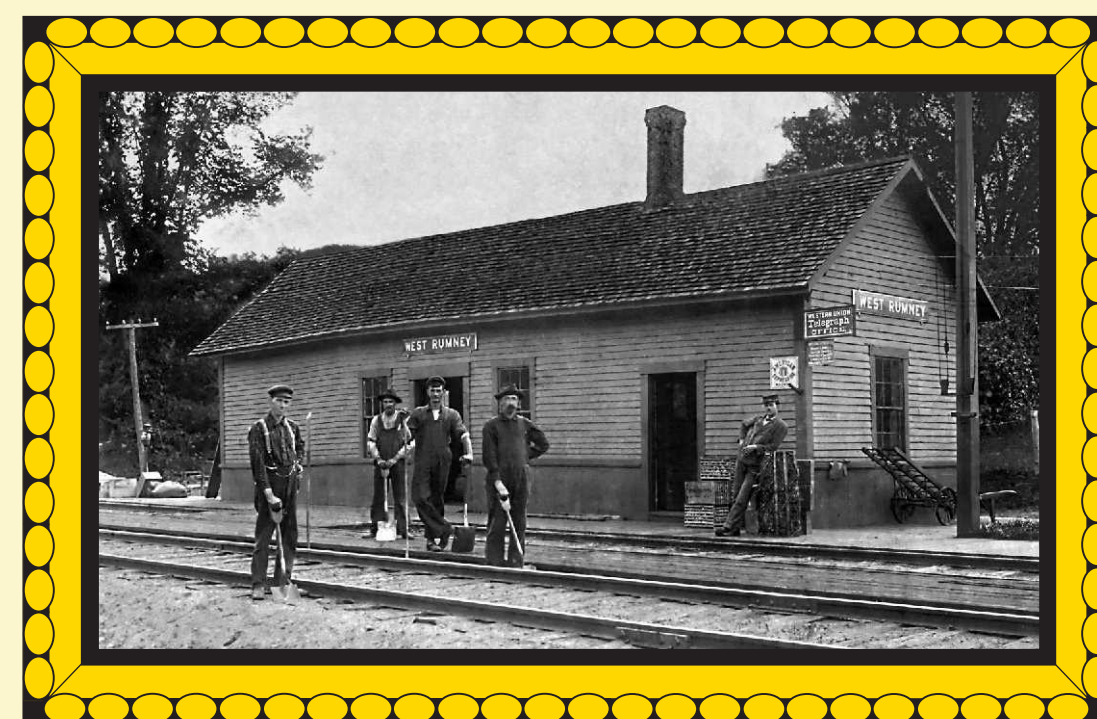
Historical Society (Old Town Hall)
Rumney Village



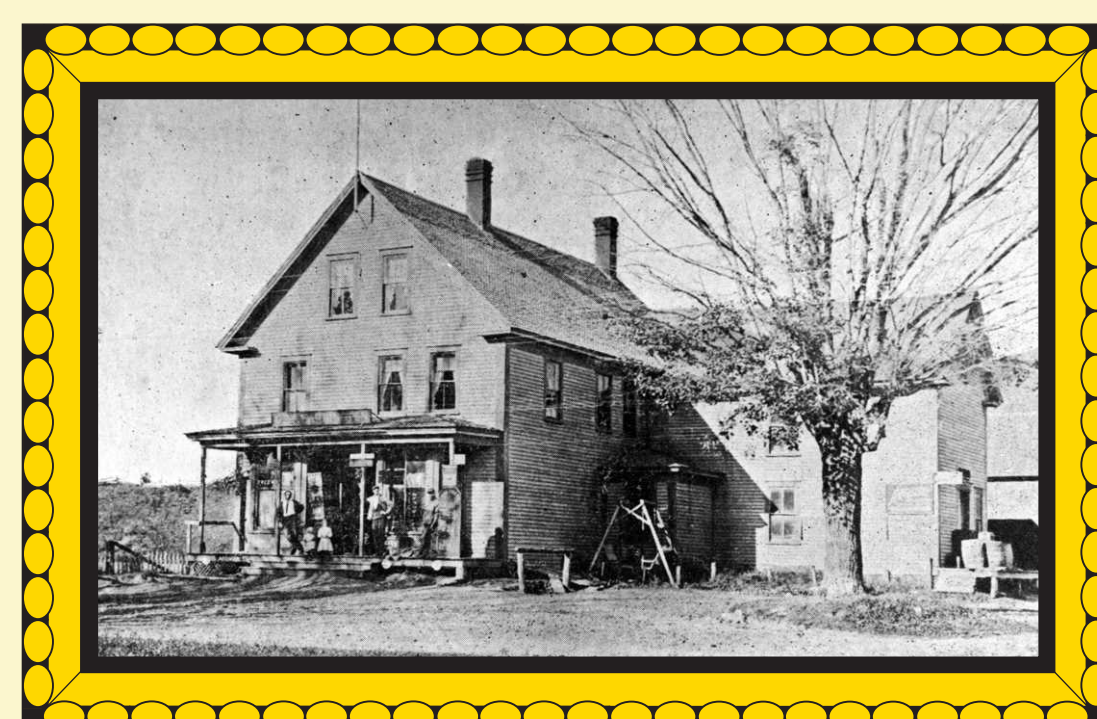
West Rumney Community Church
Old Route 25 - West Rumney



Montview School
3628 Route 25 - West Rumney



West Rumney Railroad Station



E.S. Pease General Store & Post Office
1154 Old Route 25 - West Rumney



Daniel Abbott's Crutch Mill
Mill Road



Horse Drawn Log Sled
Silsby's Mill at Stinson Lake



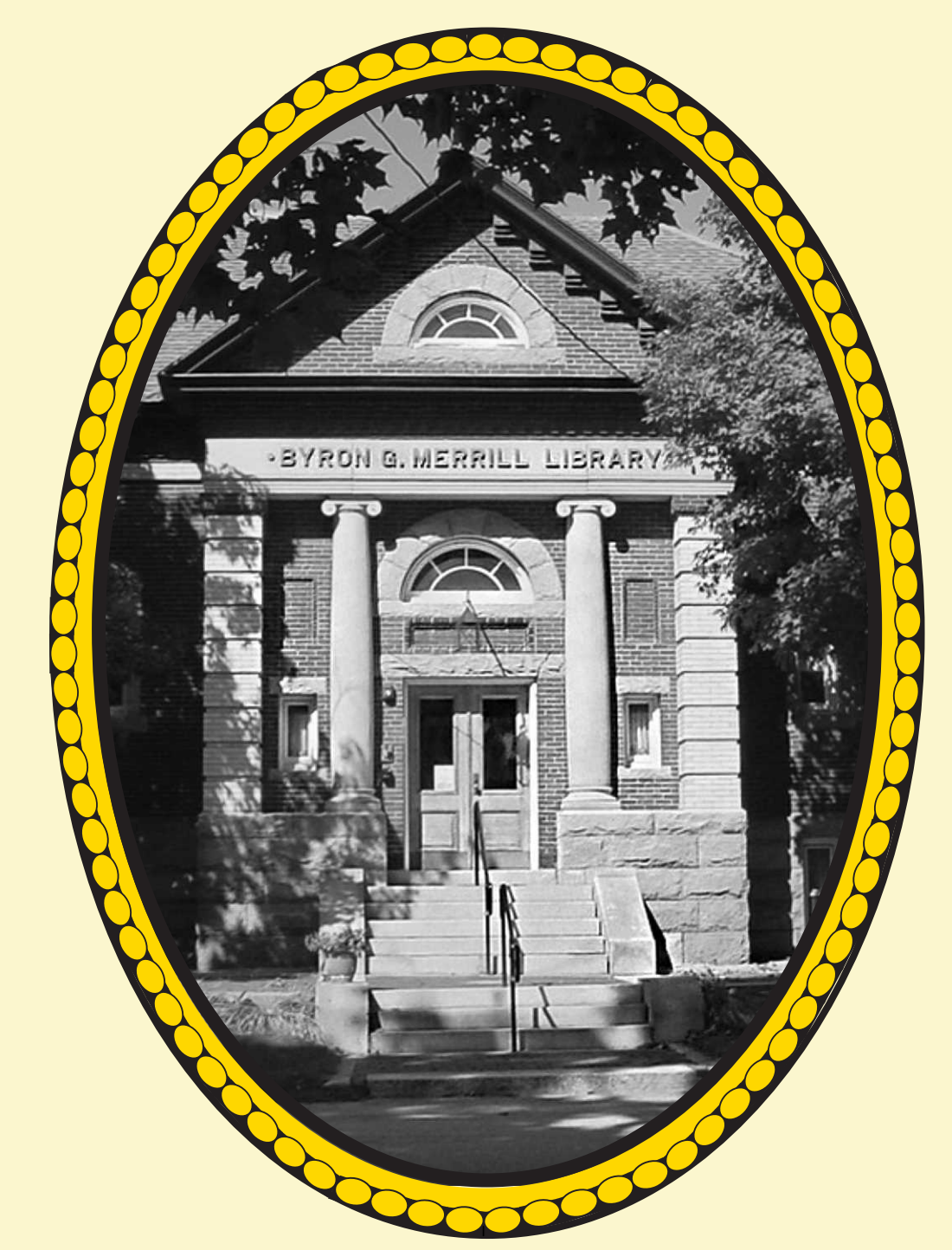
Graves Poultry Farm
1 Stone Hill Road



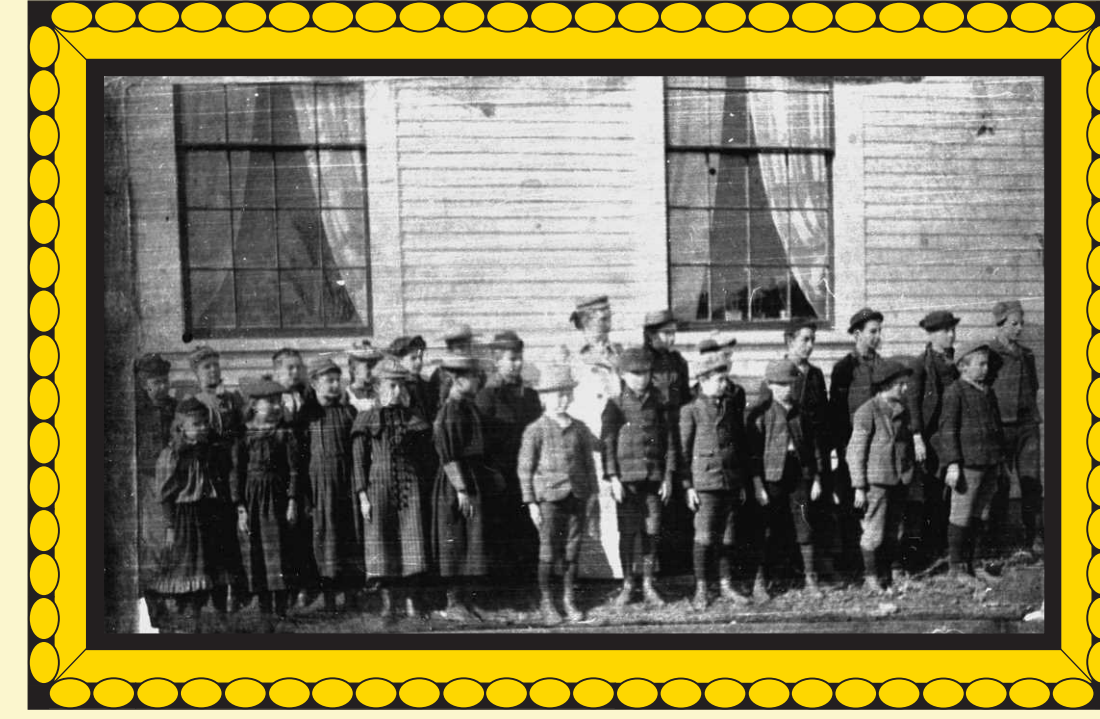
Rumney Coronet Band
c.1885



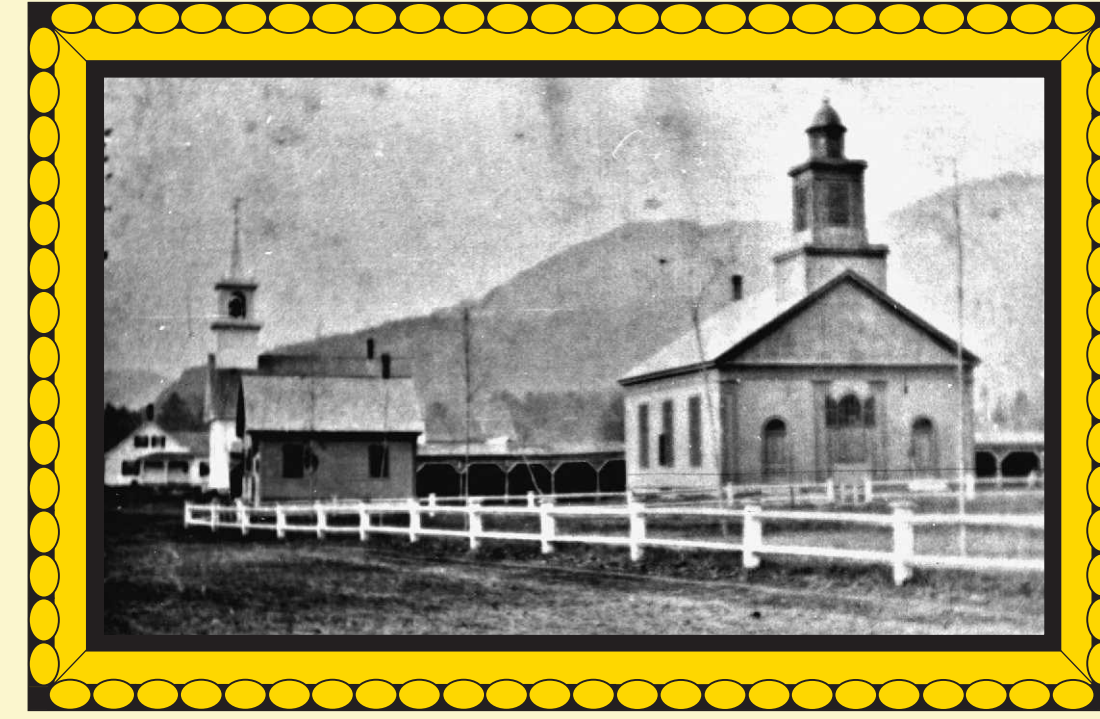
Keniston Racquet Mill
Mill Road



Byron G. Merrill Library
Rumney Village



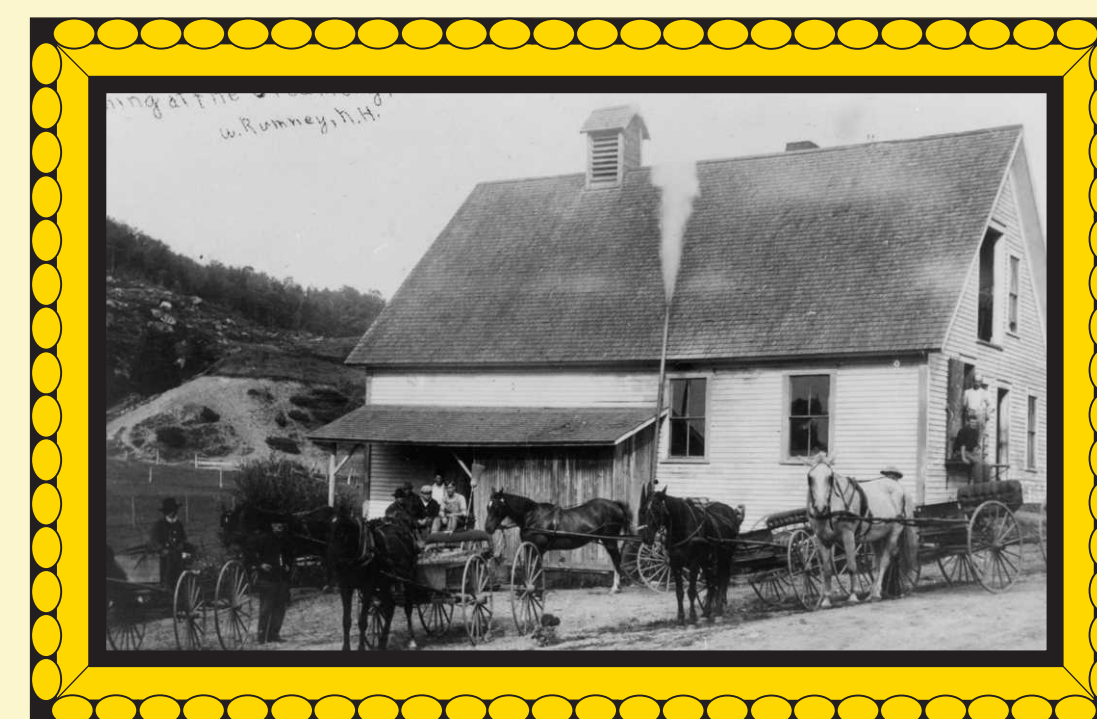
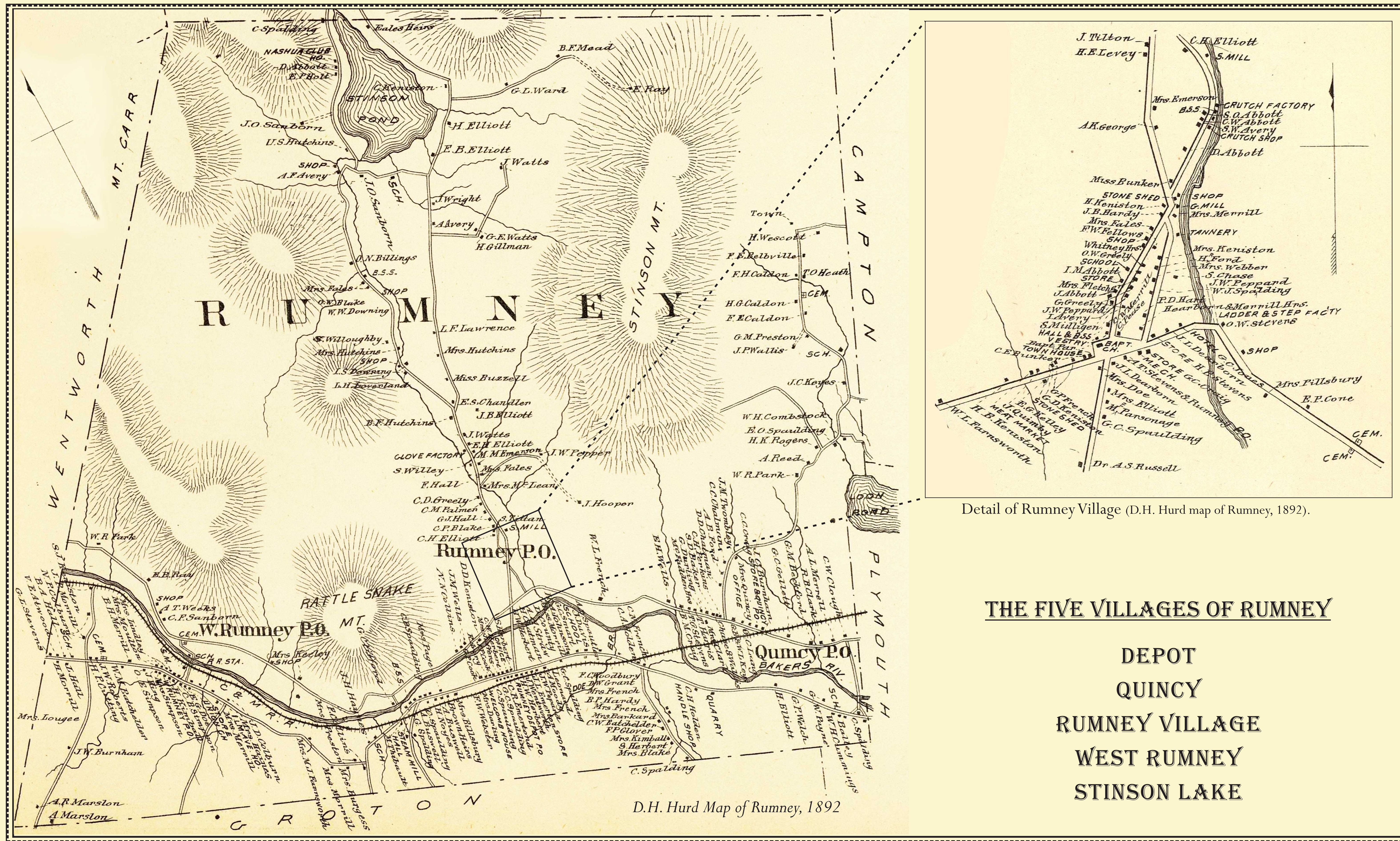
Rumney Village School
459 Main Street



Rumney Baptist Church
Rumney Village



L. Merrill Store
Rumney Village



Baker River Creamery
1129 Old Route 25 - West Rumney



Rumney Depot Railroad Station



Quincy & Ward General Store
Rumney Depot



M. Holden & Sons Camphor Works
9 Post Office Lane - Rumney Depot



Brookside Farms & Cabins
581 School Street - Rumney Depot



Quincy Railroad Station



RUMNEY, NEW HAMPSHIRE 250TH ANNIVERSARY





Rumney, New Hampshire. Sign Installed on Message Board on front of Rumney Historical Society Building